

AROT4500LB&GD Car Rotisserie



INSTRUCTION MANUAL



Read this material before using this product. Failure to do so can result in serious injury.

SAVE THIS MANUAL.



CarRotisseries.com

10585 SW Greenburg Rd,
Units F18 & F 19
Tigard, OR 97223.
(971) 270-0070 or 877-4KS-TOOLS

DESCRIPTION

This product should be used to repair and maintain automobiles. The vehicle can be lifted 50 and rotated 360°.

SPECIFICATIONS

Max Height: 50"

Width: 82"

Min Height: 19.5"

Max Length Between Support Arms: 227"

Max Length: 264.5"

Min Length Between Support Arms: 90.5"

Min Length: 128"

SAFETY PRECAUTIONS

1. DO NOT exceed the rated capacity.
2. DO NOT stand under the workplace when the lift is working.
3. This lift is mainly for lifting; it is used only under work with the support of a jack stand. Also, make sure the surrounding situation is safe.
4. After lifting, the user can only start work after locking the safety lock.

Before working with a car rotisserie, always check for any obstructions that may interfere with its operation, such as tools, air hoses, shop equipment, etc. These are generic instructions; please remember there are different ways to hook up the exact vehicle.

Properly secure and balance the vehicle's center of gravity before using the rotisserie unit.

NOTE: There are no set rules for hooking up a vehicle. Make sure to utilize the vehicle's structural mounting points.

⚠ CAUTION: IF YOU ATTEMPT TO ROTATE AN UNBALANCED VEHICLE, YOU RISK INJURY, AN UNSAFE SITUATION, AND POSSIBLE DAMAGE TO YOUR VEHICLE.

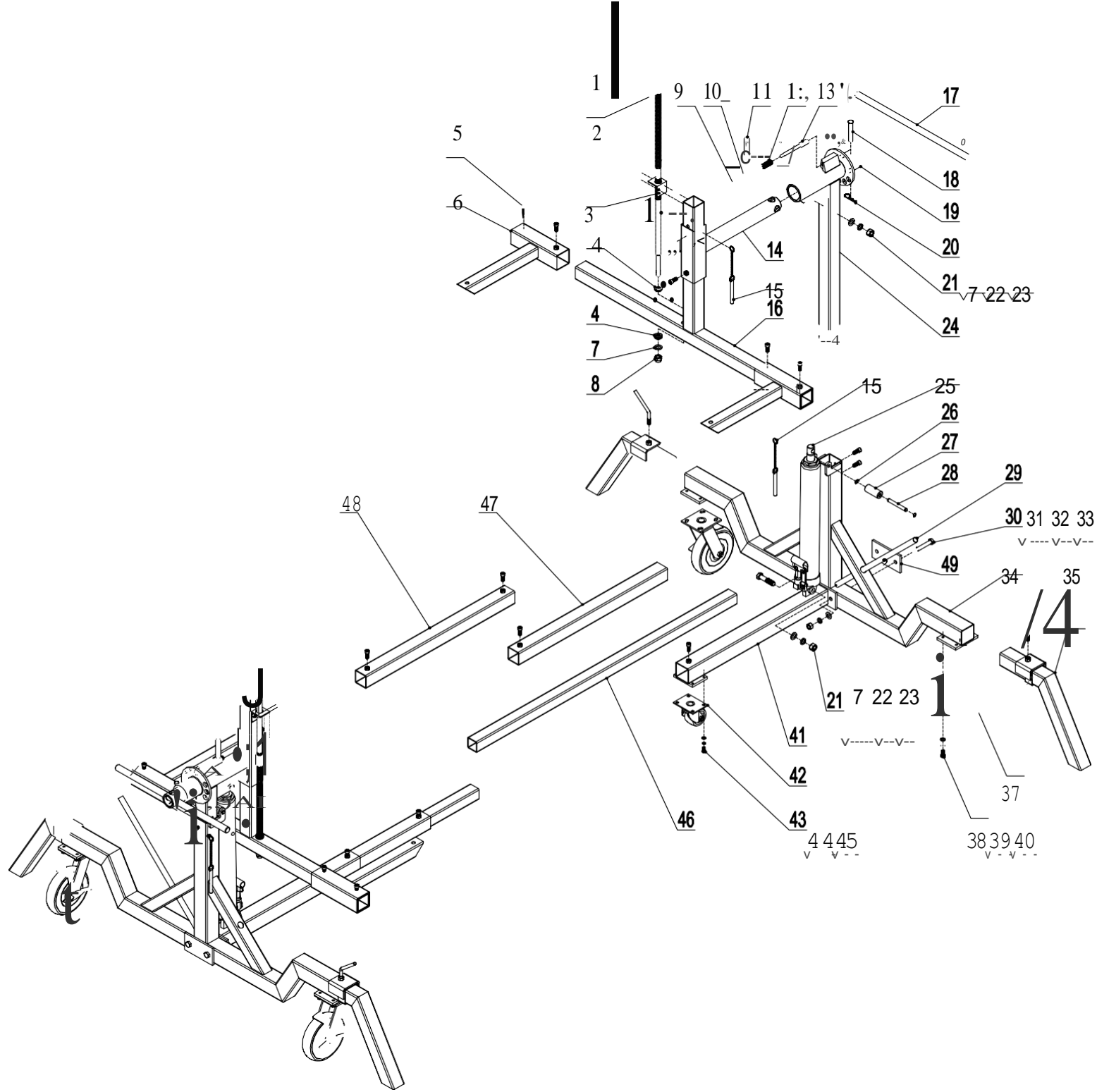
⚠ WARNING: BEFORE OPERATING THE EQUIPMENT, MAKE SURE THAT ALL THE HARDWARE IS SECURE AND THAT EACH UNIT HAS BEEN TESTED PROPERLY.

⚠ WARNING: READ THE ENTIRE MANUAL AND COMPLY WITH ALL SAFETY AND SERVICE PRECAUTIONS. DEATH, PERSONAL INJURY, AND / OR PROPERTY DAMAGE MAY OCCUR IF INSTRUCTIONS ARE NOT FOLLOWED CAREFULLY.

SAFETY PRECAUTIONS

ASSEMBLY (REFER TO PARTS LIST)

1. Unpack all components
2. Attach one #41 Main Connecting Rod to each #34 Main Stand using hardware #30-33 – PLACE BOLTS THROUGH SUPPORT PLATE #49 before PUSHING THROUGH #34
3. Attach two #37 8" Casters to each #34 Main Stand using hardware #38-40
4. Attach one #42 3" Caster to each #41 Main Connecting Rod using hardware #43-45
5. Insert one #47 Connecting Rod into each #41 Main Connecting Rod
6. Insert one #46 Extending Rod into each #47 Connecting Rod
7. Insert the other end of each #46 Extending rod into the #48 intermediate Connecting Rod
8. Attached one #25 Hydraulic Cylinder to each #34 Main Stand using hardware #7, 21-23, 30-33
9. Insert one #24 Lifting Stand into each #34 Main Stand
10. Insert one #14 Rotating Stand into each #24 Lifting Stand
11. Slide one #19 Locking plate onto each #14 Rotating Stand and attach using hardware #18, 20
12. Remove hardware #4, 7, and 8 from each #1 Adjust Screw Rod
13. Insert one #16 Stand into each #14 Rotating Stand
14. Place one set of hardware #7, 4, and 7 onto #1. Adjust the Screw Rod before pushing #1 through the hole in #16 Stand
15. Place the second set of hardware #7, 4, and 7 onto #1. Adjust the Screw Rod and secure it using hardware #8 – DO NOT OVERTIGHTEN
16. Attach #3 Screw Rod Stand to #16 Stand using hardware #2
17. Slide two #6 Movable Stand onto each #16 Stand
18. Loosely attach twenty-two #5 Screw into each respective set screw welded nut for use as needed
19. Re-check all hardware and test each #25 Hydraulic Cylinder before each use

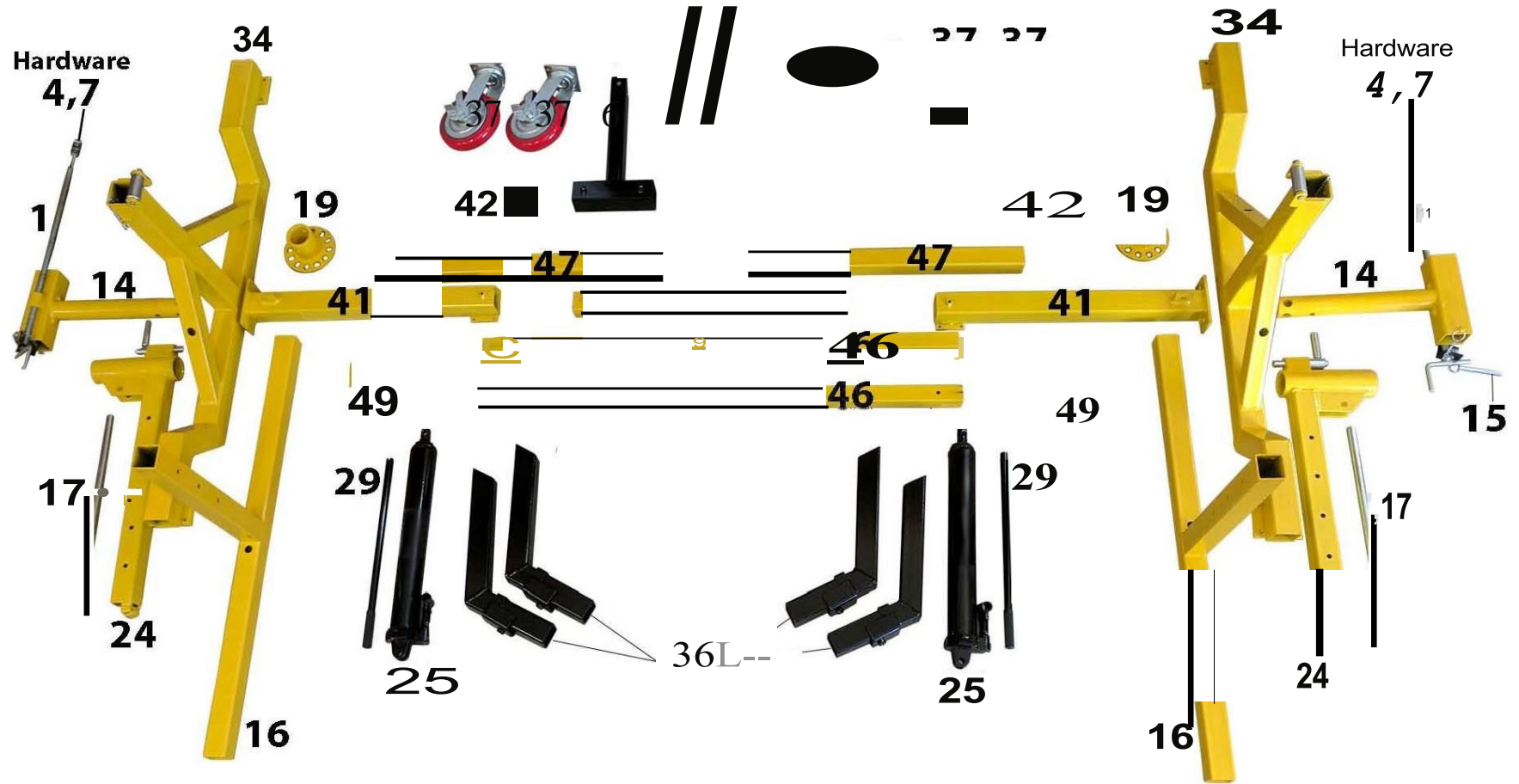


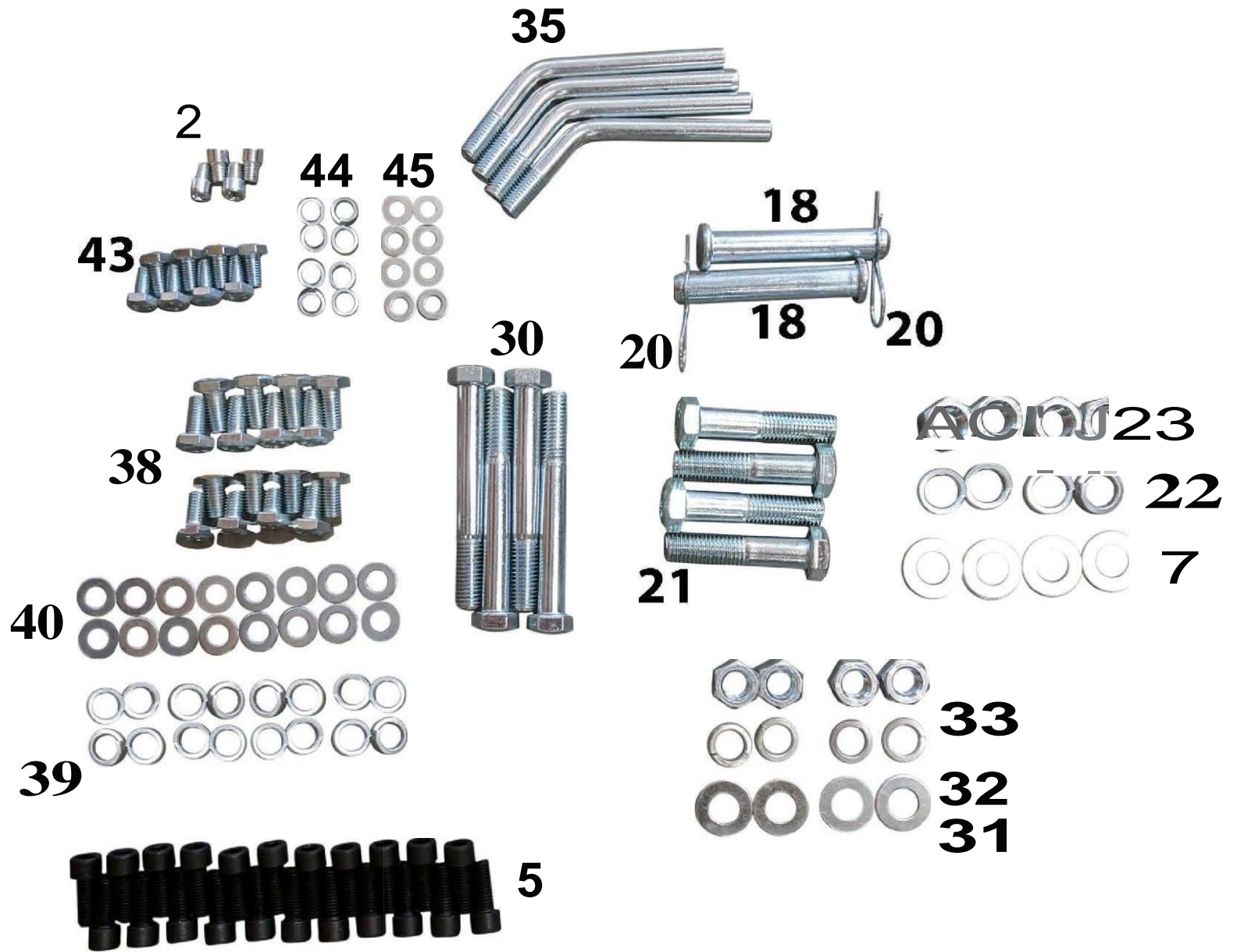
PARTS DIAGRAM

PARTS LIST

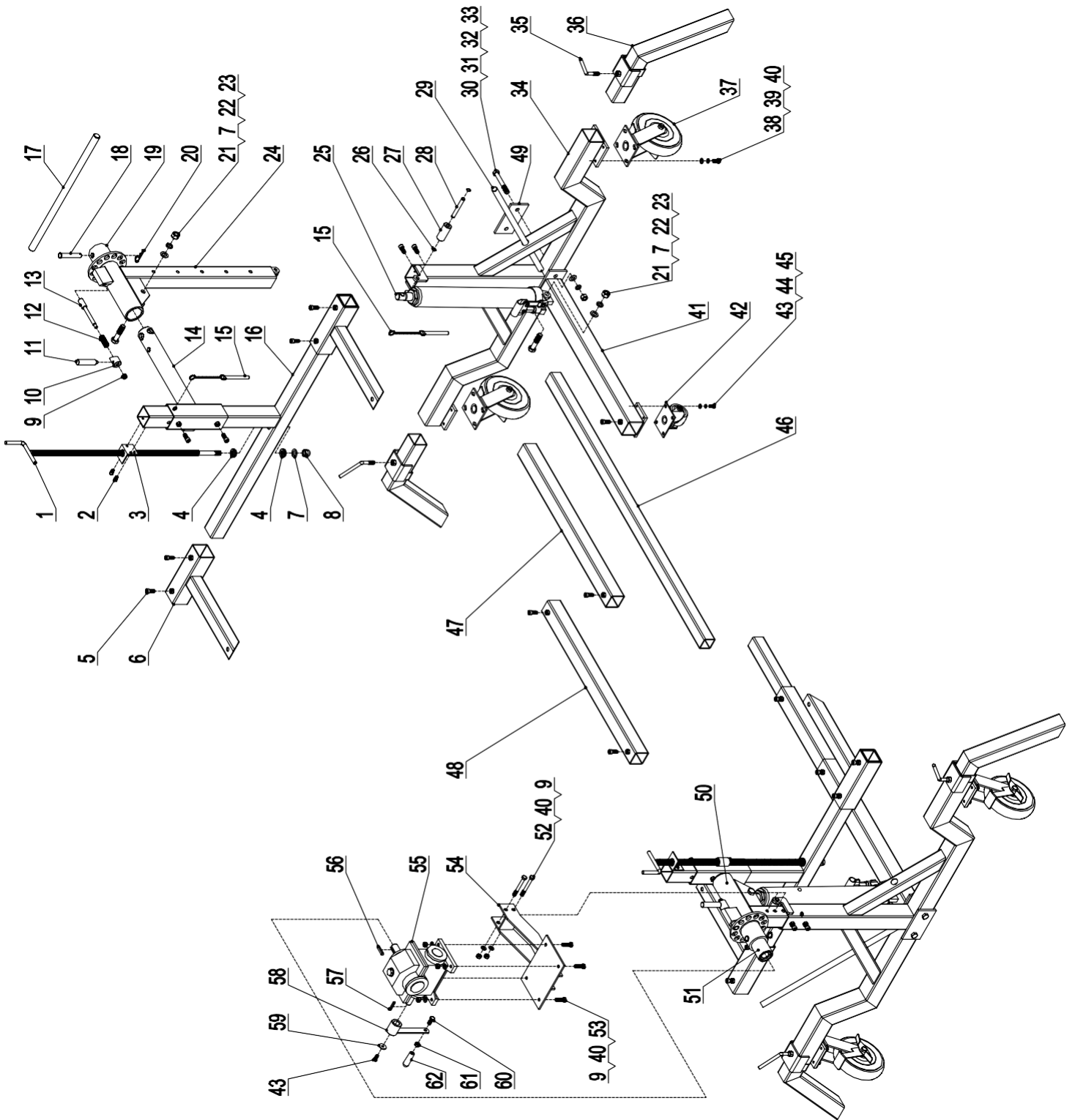
N0.	Description	QTY	N0.	Description	QTY
1	Adjust Screw Rod	2	26	Circlip	4
2	Screw M8*12	4	27	Guide Sleeve	2
3	Screw Rod Stand	2	28	Guide Spindle	2
4	Bearing	4	29	Operation Handle	2
5	Screw M10*16	22	30	Bolt M14*100	4
6	Movable Stand	4	31	Flat Washer Φ 14	4
7	Flat Washer Φ 16	6	32	Lock Washer Φ 14	4
8	Lock Nut M16	2	33	Lock Nut M14	4
9	Lock Nut M10	2	34	Main Stand	2
10	Wedge Handle Seat	2	35	Set Screw	4
11	Handle	2	36	Steel Feet	4
12	Spring	2	37	8" Caster	4
13	Locking Pin	2	38	Bolt M10*20	16
14	Rotating Stand	2	39	Lock Washer Φ 10	16
15	Chain Pin	4	40	Flat Washer Φ 10	16
16	Stand	2	41	Main Connecting Rod	2
17	Turning Handle	2	42	3" Caster	2
18	Connecting Pin	2	43	Bolt M8*16	8
19	Locking Plate	2	44	Lock Washer Φ 8	8
20	R-pin	2	45	Flat Washer Φ 8	8
21	Bolt M16*70	4	46	Extending Rod	2
22	Lock Washer Φ 16	4	47	Connecting Rod	2
23	Nut M16	4	48	Intermediate Connecting Rod	1
24	Lifting Stand	2	49	Plate	2
25	Hydraulic Cylinder	2			

PARTS DIAGRAM AROT4500LB



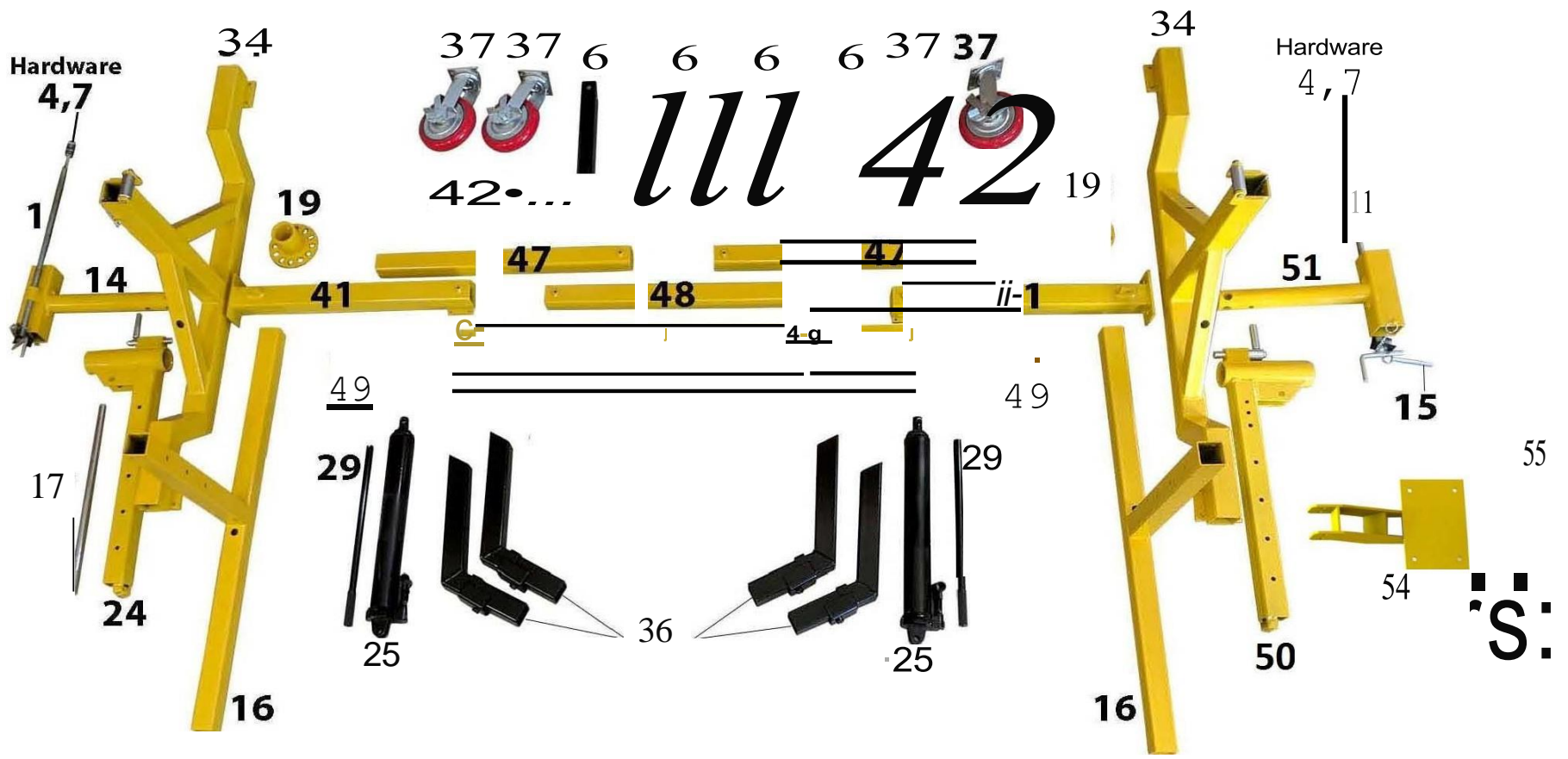


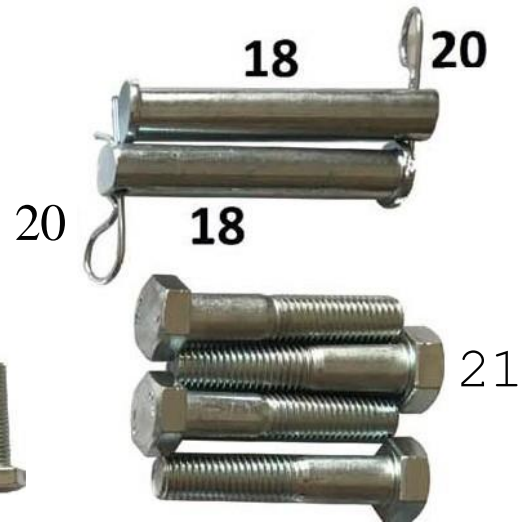
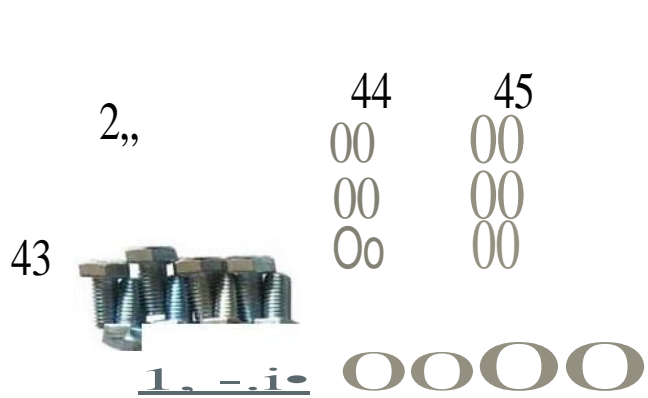
PARTS DIAGRAM AROT4500GD (Gearbox)



PARTS LIST AROT4500GD (Gearbox)

N0.	Description	QTY	N0.	Description	QTY
1	Adjust Screw Rod	2	32	Lock Washer Φ14	4
2	Screw M8*12	4	33	Lock Nut M14	4
3	Screw Rod Stand	2	34	Main Stand	2
4	Bearing	4	35	Set Screw	4
5	Screw M10*16	22	36	Steel Feet	4
6	Movable Stand	4	37	8" Caster	4
7	Flat Washer Φ16	6	38	Bolt M10*20	16
8	Lock Nut M16	2	39	Lock Washer Φ10	16
9	Lock Nut M10	8	40	Flat Washer Φ10	22
10	Wedge Handle Seat	2	41	Main Connecting Rod	2
11	Handle	2	42	3" Caster	2
12	Spring	2	43	Bolt M8*16	9
13	Locking Pin	2	44	Lock Washer Φ8	8
14	Rotating Stand "A"	1	45	Flat Washer Φ8	8
15	Chain Pin	4	46	Extending Rod	2
16	Stand	2	47	Connecting Rod	2
17	Turning Handle	1	48	Intermediate Connecting Rod	1
18	Connecting Pin	2	49	Plate	2
19	Locking Plate	2	50	Lifting Stand "B"	1
20	R-pin	2	51	Rotating Stand "B"	1
21	Bolt M16*70	4	52	Bolt M10*90	2
22	Lock Washer Φ16	4	53	Bolt M10*35	4
23	Nut M16	4	54	Gearbox Base	1
24	Lifting Stand "A"	1	55	Gearbox	1
25	Hydraulic Cylinder	2	56	Flat Key 8*7	1
26	Circlip	4	57	Flat Key 6*6	1
27	Guide Sleeve	2	58	Rocking Handle	1
28	Guide Spindle	2	59	Big Flat Washer Φ8	1
29	Operation Handle	2	60	Bolt M10*25	1
30	Bolt M14*100	4	61	Nut M10	1
31	Flat Washer Φ14	4	62	Handle Sleeve	1





39 00000000
00000000

000()009

000023



000()33

000022



000032₀

rave ¾li+i



31

1414141

30